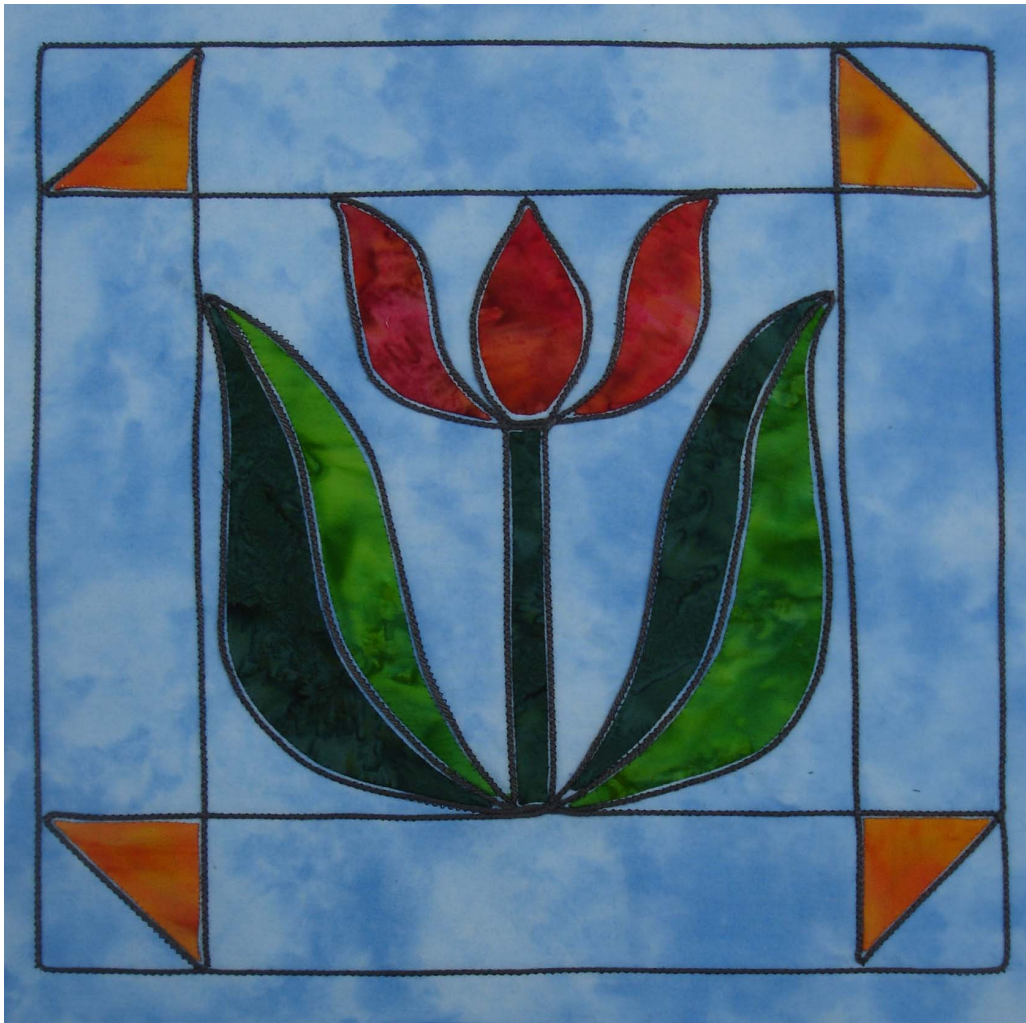


## *Instructions for stained glass panel*



### **Needs list**

Pale background fabric 15 1/2" x 15 1/2" I have used batiks throughout as I find the tighter weave of batiks fray less. Small amount of the background fabric as a "trial run" piece.

Applique fabric in two flower colours and two greens for the leaves. I also find batiks work well for this.

!00 % mercerised cotton knitting yarn 4m

Thread to match

Sewing machine and open toed or clear machine foot

Iron and ironing board, spray starch

Pattern enlarged by 120%

Masking tape

Pencil, rubber, ruler

Rotary cutting set

15 1/2" x 15 1/2" very lightweight iron on vilene plus a scrap

Hand sewing kit and thread to match the applique leaves and flowers

## **Outline**

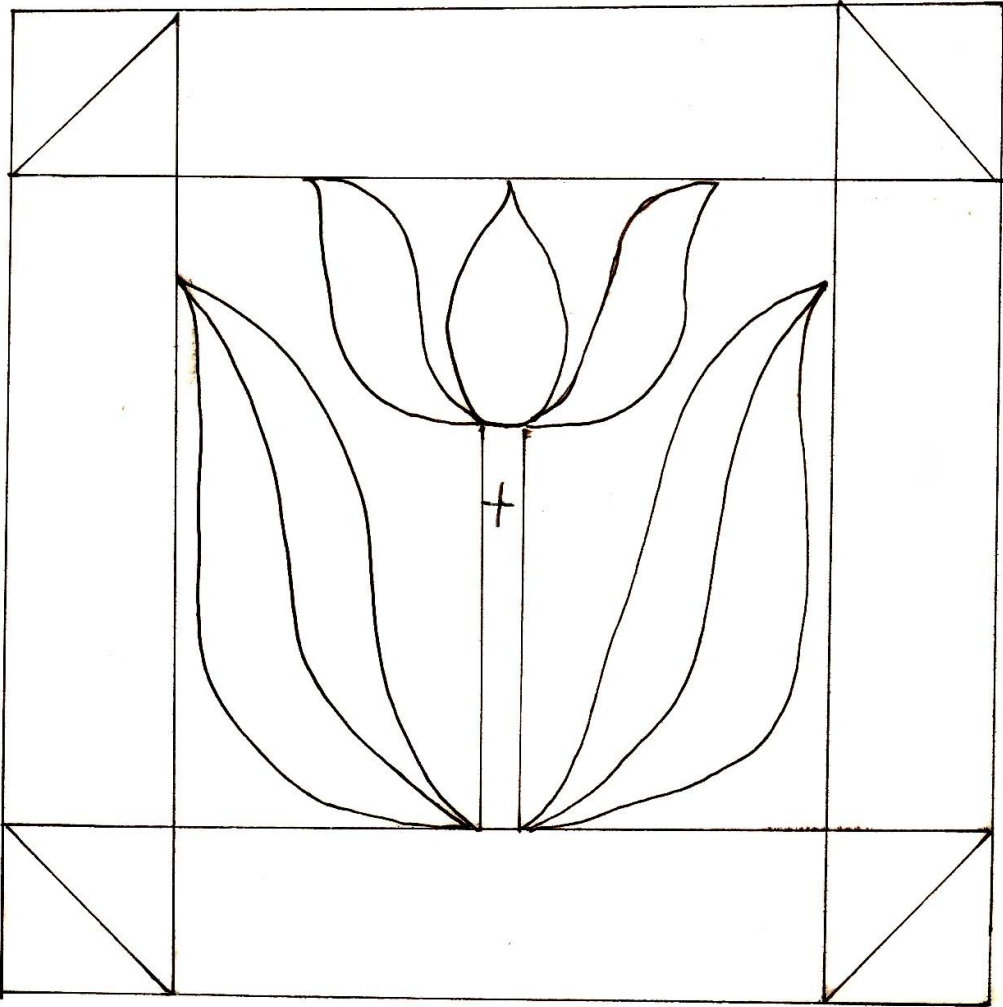
Enlarge the pattern to the size you would like it to be. I enlarged the pattern to be 12" square which meant I enlarged it on my printer by about two times. The frame would not fit on an A4 piece of paper, but you can cut out the enlarged central portion and draw on the border. A 2" wide border looks right for a 12" overall pattern.

Tape the pattern to a table top or, if you are using a dark fabric, to a light box. Take the fabric square and iron flat using spray starch. Also spray starch onto a "trial run" piece of fabric so you can work out what size of zig zag you will need to cover the cotton yarn. Fold the large square of fabric into 4 and crease so that you have marked the centre of the fabric. Tape the fabric over the pattern lining up the centre of the fabric with the centre cross on the pattern. Trace the pattern in pencil onto the fabric.

Iron the light weight vilene to the back to the back of the fabric, and to the trial run piece. Thread the machine with thread that matches the yarn both as the top thread and the bobbin. With a large tapestry needle thread the yarn from the top to the bottom of the trial run fabric so it threads off the ball of yarn as you go and try out the zig zag. Secure the machine thread by doing three small straight stitches before starting on the zigzag. For Bernina machines the approx machine stitch width is 1.2 and the stitch length is 1.5 giving a gentle zigzag. You may need to experiment with a couple of different sewing machine feet to see what gives the best results, The foot should have a groove on the bottom of it so it will travel over the yarn easily, and the zig zag should tuck round the yarn neatly. Thread the yarn from top to bottom as you did with the trial run piece starting at the place marked on the pattern. Follow the arrows round the design and thread the yarn down to the back of the fabric when finished. You should only need to start and stop once.

## **Applique.**

Cut a piece of fabric large enough to cover the area you want to applique, I started with the flower. Lay the flower fabric down onto one of the flower shapes on the panel and run your finger nail or a pin round the inside edge, making a crease in the applique fabric. Take the applique fabric off the panel and cut 1/4" outside the crease you have marked. Pin the applique shape onto the panel and use the needle turn applique method to applique down the shape. There will be a small gap between the yarn and the edge of the applique. Continue with with the other applique shapes until you have finished.



0 1 2"  
inches

