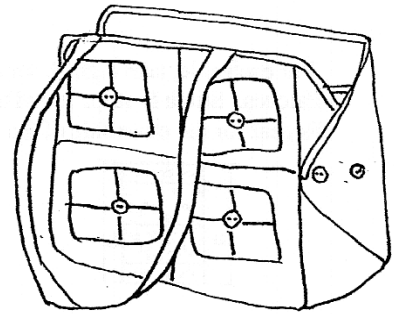
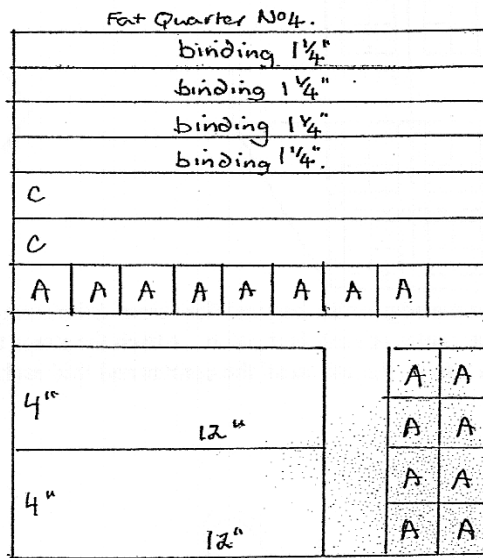
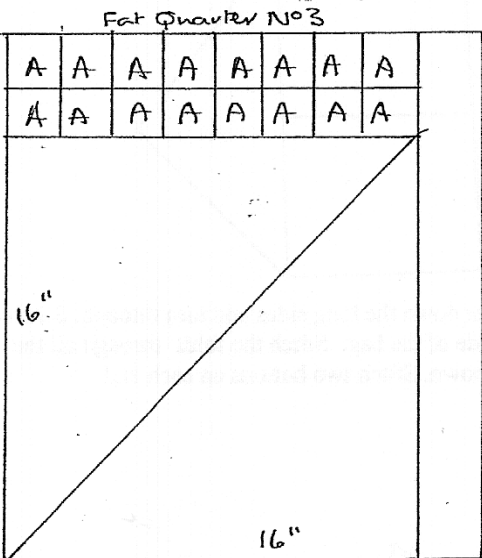
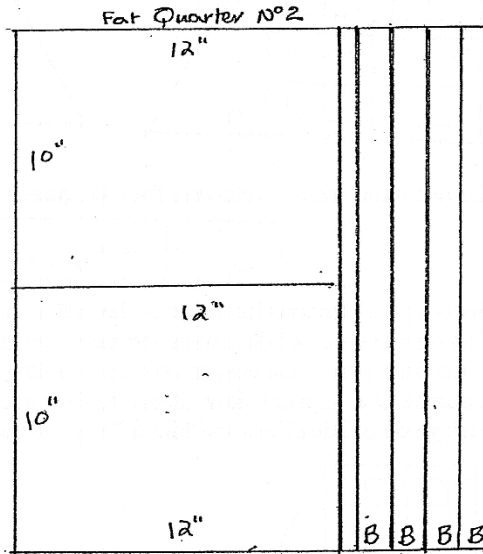
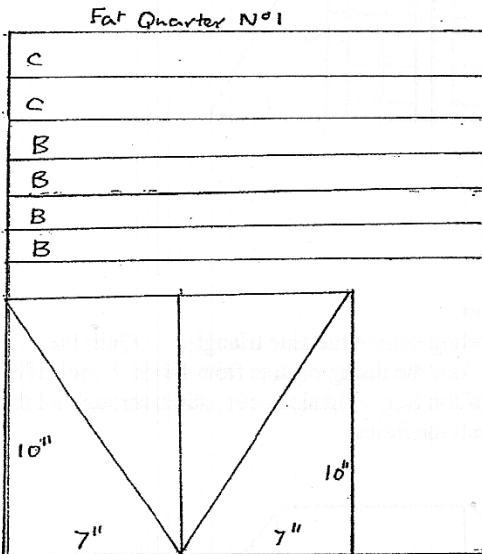


Button Bag

This bag is constructed flat and then folded to form the bag. You need 4 fat quarters to make the bag, I used a bundle of fat quarters from Needle and Thread near Woking (needleandthread.dsl.pipex.com) They have their shop here today and have the fabric and buttons you need for this pattern. You will also need some wadding – two pieces 10" square and one piece 23" x 4 1/2", this bag is only wadded on the side panels and the base.



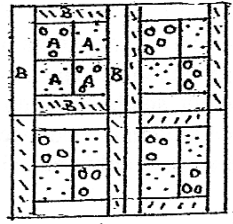
All A shapes are 2" x 2" and make up the four patches that are on the front and back panels.
 All B strips are 1 1/4" long and make the strips round the four patches.
 All C strips make the straps. 1 3/4" wide.



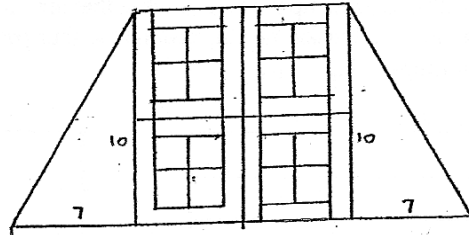
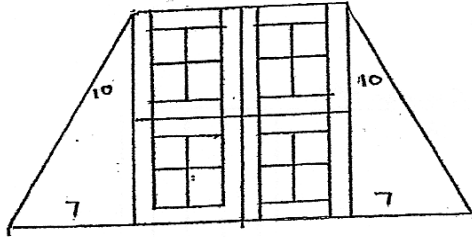
This bag pattern is brought to you by Christine Thomas and Melyn Robinson. Christine teaches patchwork and quilting on Tuesdays and Wednesdays and some Saturdays in Yateley. Please look at her web site, xtinequilts.co.uk for details and what her students have been up to! Melyn's web site is luckleywood.com. and has pixie kits, free patterns and much more. Christine can be contacted on 01189 786870 or xtinethomas@fiscali.co.uk.

© C Thomas '09
 M. Robinson '09

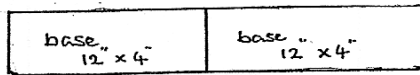
For each side, take eight A squares from fabric 3 and eight A squares from fabric 4. Make the A squares into 4 Four Patches. Stitch B strips round the Four Patches. then stitch them into a panel for each side of the bag, as below. Repeat for the other side of the bag.



Now stitch on the sides from fat quarter number 1 as below.

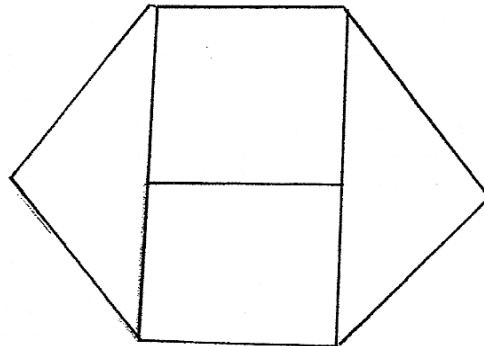
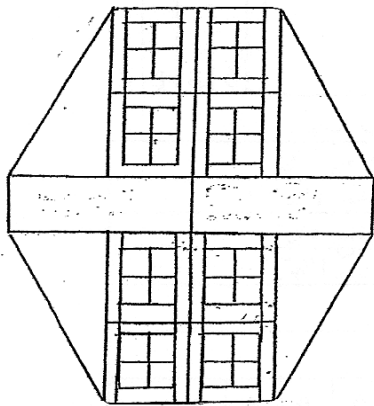


Now join the two base pieces lengthways from fat quarter number 4



Join a patchwork panel section either side of the base as shown below.

Tack wadding onto the back of the panels and base. Do not put wadding behind the side triangles. Quilt the wadding to the front panels and base to hold the wadding in place. Join the lining centres from fabric 2 and sides from fabric number 3 as shown below. Pin on to the wadding side of the bag, right sides out, stitch through all the layers following you quilting lines and trim off any excess fabric from the lining.



Stitch round the edge of the bag and then bind. Stitch straps together down the long sides and turn through. Stitch a button in the centre of each four patch. Attach the straps to the inside of the bag. Stitch the folds through all the layers from x to y. Repeat on all the corners and fold each end as shown. Stitch two buttons on each end.

